

# Sumitomo Bakelite

Environmental Report  
2000

 **SUMITOMO BAKELITE CO., LTD.**

# Operations Overview

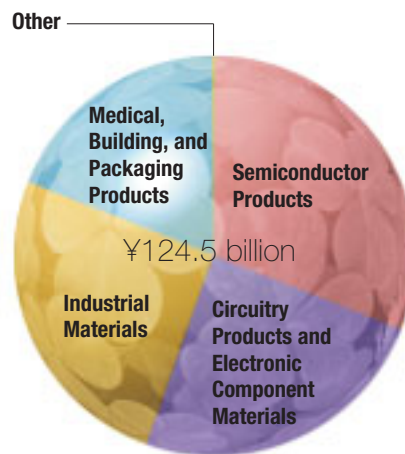
Sumitomo Bakelite Co., Ltd., is the first company in Japan to manufacture the phenolic resin Bakelite, the oldest plastic still in widespread use today. From the beginning, its high-level technological acumen and cutting-edge facilities have ensured the Company a place at the forefront of Japan's plastics industry. Today, Sumitomo Bakelite manufactures and markets a wide variety of plastics and plastic products, ranging from semiconductor products, circuitry products and electronic component materials, and industrial materials to medical, building, and packaging products.

## Product Mix (By Business Division)

|  |  |
|--|--|
| ● <b>Semiconductor Products</b>                                | Epoxy resin molding compounds<br>Liquid resins for semiconductors<br>Carrier tape for semiconductor packaging<br>Polyimide adhesive tape   |
| ● <b>Circuitry Products and Electronic Component Materials</b> | Epoxy resin copper-clad laminate<br>Phenolic resin copper-clad laminate<br>Flexible print circuits   |
| ● <b>Industrial Materials</b>                                  | Phenolic resin molding compounds<br>Vinyl resin molding compounds<br>Urea melamine resin adhesives<br>Phenolic industrial resins<br>Formalin<br>Precision-molded products<br>Precision molds |
| ● <b>Medical, Building, and Packaging Products</b>             | Medical equipment<br>Medical instruments<br>Decorative laminates<br>Vinyl resin sheets<br>Multilayer sheets  |

## Net Sales

(Fiscal year ended March 31, 2000)  
¥124.5 billion (Non-consolidated)  
¥192.7 billion (Consolidated)



## Table of Contents

|  |    |
|--|----|
| A Message from the President.....                                  | 1  |
| Corporate Policies for Safety, Health,<br>and the Environment..... | 2  |
| Environmental Management Organization.....                         | 3  |
| Environmental Management Initiatives.....                          | 4  |
| Environmental-Conservation Activities.....                         | 5  |
| ● Management of chemical substances.....                           | 5  |
| ● Waste reduction and recycling.....                               | 7  |
| ● Energy saving.....   | 8  |
| ● Air and water pollution prevention.....                          | 9  |
| Environmental Products and<br>Technology Development.....          | 10 |
| Hand in Hand with Society.....                                     | 11 |
| Sumitomo Bakelite Group.....                                       | 12 |
| Corporate Data.....  | 13 |

# A Message from the President

Sumitomo Bakelite Co., Ltd., is the first company in Japan to manufacture the phenolic resin Bakelite, the first plastic ever invented. Since then, we have continuously harnessed the properties of plastic and, through the provision of products endowed with these properties, operate guided by our corporate philosophy of contributing to the advancement of society.

Having deemed “environmentally sympathetic corporate management” a policy integral to our business activities, Sumitomo Bakelite strives to integrate safety, health, and the protection of the environment into all of its commercial endeavors. Moreover, we are actively engaged in Responsible Care programs.

Responsible Care programs call on manufacturers to pursue—voluntarily—a reduced environmental impact from their products as well as safety and health assurances, not only at the R&D and production stages but also when customers use and then finally dispose of such products. Sumitomo Bakelite has been participating in Responsible Care programs since the founding of the Japan Responsible Care Council in 1995.

We also began publishing environmental reports in 1998 and have been proactively disclosing both our beliefs about the environment and the progress of our environmental efforts. Furthermore, this year we made the decision to adopt environmental accounting in the interests of further corporate development through employees’ deeper environmental awareness and enhanced effectiveness in our environmental efforts.

In the coming months and years, Sumitomo Bakelite will continue to strive for voluntary environmental-conservation efforts. It is my hope that, through this report, you the reader will gain a better understanding of our stance on the environment and the progress of our environmental efforts, and that you will offer us your opinions and suggestions for future programs.

September 2000

*Tsuneo Moriya*

Tsuneo Moriya  
President and CEO



# Corporate Policies for Safety, Health, and the Environment

Sumitomo Bakelite established its corporate policies on safety and the environment in 1997 and positioned the protection of the environment and the assurance of safety and health among the key commitments upheld by facilities and affiliated companies both in Japan and overseas.

All offices act in line with these policies and, at the same time, prepare internal regulations based on them. They also promote the creation of ISO 14001-compliant systems. We are proud to say that all Sumitomo Bakelite plants have attained ISO 14001 certification.

## Corporate Policies for Safety, Health, and the Environment

### ● Philosophy

In all its operations, Sumitomo Bakelite will conform with the standards dictated by the precepts of Responsible Care and give due consideration to human health and safety as well as protection of the environment.

### ● Policies

In accordance with this philosophy, we will:

1. Evaluate the safety, health, and environmental aspects of all corporate activities, from product design through product disposal, strive to minimize the environmental impact of our activities, and develop safe products and technologies;
2. Make sustained, Companywide efforts to promote resource and energy conservation, recycling, and waste reduction;
3. Implement operational safety management programs for our employees and the communities in which we operate;
4. Work to improve product safety and the safety of transportation operations as well as provide product safety information to customers and others;
5. Comply with all relevant laws, regulations, and agreements associated with safety, health, and the environment while voluntarily establishing administrative rules designed to promote safety, health, and environmental protection; and
6. Perform environment and safety inspections as well as work to maintain and improve environment and safety management.

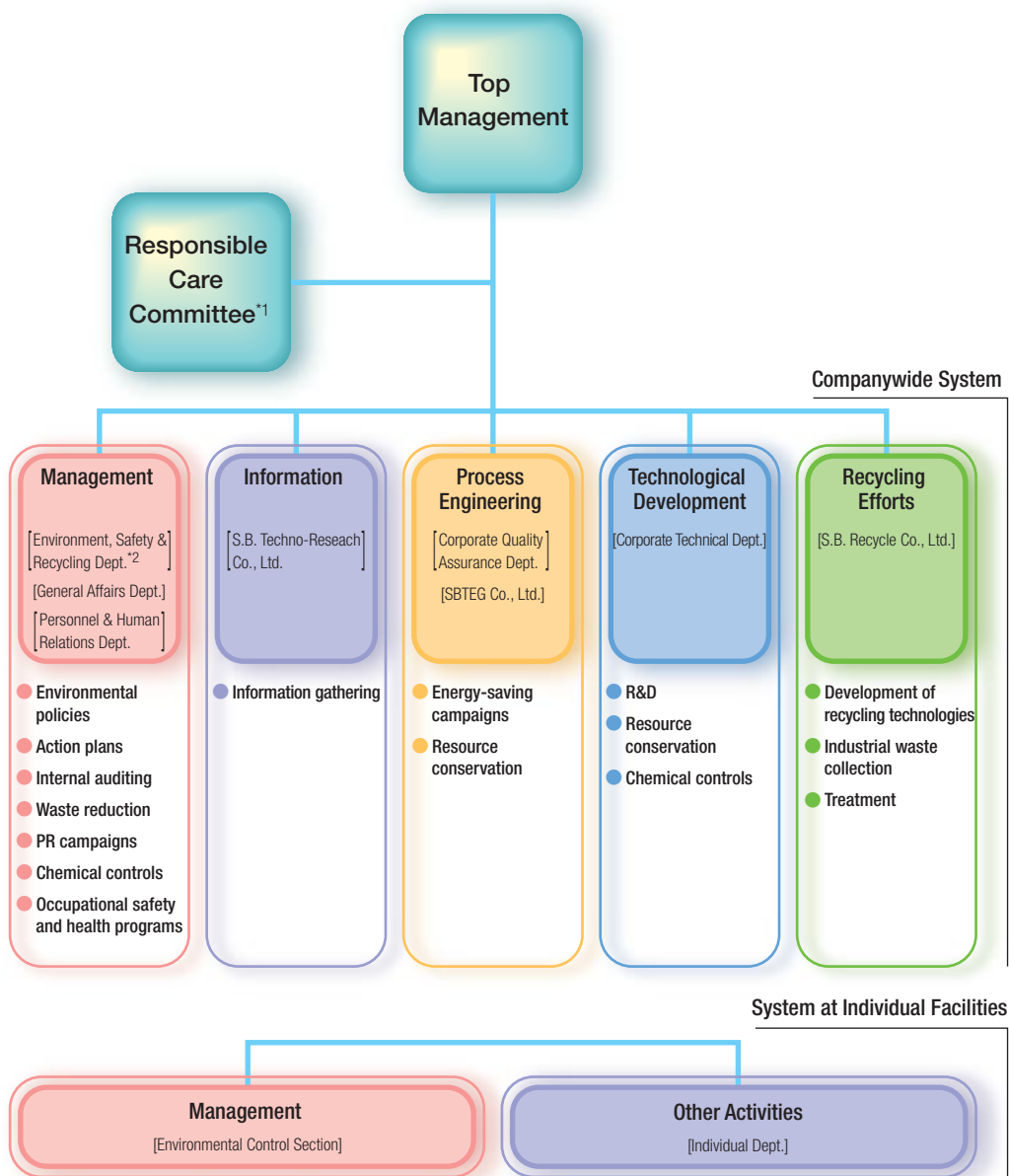
## History of Environmental-Conservation Activities

- 1969** Anti-pollution office established
- 1973** Environmental Management Dept. established  
Annual environmental auditing of all domestic offices and business locations begins
- 1974** Environmental management section established at all offices and facilities
- 1978** Annual environmental auditing of all domestic affiliates begins (conducted annually)
- 1990** Environmental Action Committee established  
Board Director in charge of safety and the environment appointed
- 1992** S.B. Recycle Co., Ltd., established
- 1993** Environmental Dept. and Recycling Dept. integrated and established the Environment, Safety & Recycling Dept.  
Safety and Environmental Management Regulations formulated  
Environmental auditing of Association of Southeast Asian Nations (ASEAN) begins (conducted once every three years)
- 1995** Responsible Care Committee established  
Sumitomo Bakelite joins the Japan Responsible Care Council as a founding member
- 1996** Safety and Environmental Management Regulations revised  
Environmental Auditing Regulations reviewed and renamed the Safety and Environmental Auditing Regulations  
PRTR (Pollutant Release and Transfer Register) implemented at all offices and facilities
- 1997** Corporate Policies for Safety, Health, and the Environment formulated  
Company resolves to put in place environmental management systems at all offices and facilities  
Utsunomiya Plant and one overseas affiliate obtain ISO 14001 certification
- 1998** First Environmental Report published  
Three plants obtain ISO 14001 certification, thereby completing certification for all Sumitomo Bakelite plants  
Two domestic affiliates and two overseas affiliates also obtain certification
- 1999** English language Corporate Policies for Safety, Health, and the Environment formulated
- 2000** Environmental accounting adopted

# Environmental Management Organization

In accordance with its Corporate Policies for Safety, Health, and the Environment, Sumitomo Bakelite has introduced a Responsible Care Committee as a support staff for top management. The implementation of Responsible Care is conducted by the environmental management and individual project parties of both a Companywide organization centered on the head office as well as parallel organizations attached to Sumitomo Bakelite facilities.

## Environmental Management System



\*1 Responsible Care Committee: Devises and plans Company Responsible Care programs; considers and approves programs for individual offices and facilities

\*2 Environment, Safety & Recycling Dept.: Serves as the secretariat for Responsible Care programs; coordinates overall programs of individual offices and facilities

- Offers managerial support for protection and improvement of the environment and safety preservation at all offices and facilities
- Conducts internal audits on the safety and environmental Responsible Care programs of all offices and facilities (annually in Japan and once every three years overseas)
- Supports acquisition of ISO 14001 certification
- Supports surveys of chemical safety controls and legal restrictions, applications, etc.
- Plans and investigates recycling programs both internally and externally

# Environmental Management Initiatives

Sumitomo Bakelite regards conforming to the standards of Responsible Care as one of the key principles of all of its operations. To protect safety, health, and the environment, the Company implements internal auditing and employee training as well as promotes the introduction of ISO 14001-based environmental management systems at each of its offices and facilities.

## Responsible Care Programs

In 1995, Sumitomo Bakelite joined the Japan Responsible Care Council as a founding member and committed itself to Responsible Care goals in all of its operations.

Ever since, the Company has adhered to the principles, standards, and policies of the Council and formulated and implemented both annual and long-term plans related to safety, health, and the environment. We are actively engaged in such chemical safety programs as MSDS (Material Safety Data Sheets), Yellow Card (emergency response cards), and PRTR (Pollutant Release and Transfer Register) and are also pushing forward with zero-emission and energy-saving initiatives. We are leveraging our advanced technologies in the cause of recycling. Through across-the-board improvements to the environmental aspects of its operations and the increasingly efficient use of resources, Sumitomo Bakelite is playing its part in the formation of a society where as little as possible is thrown away.

From the R&D stage through production, usage, and disposal, the likely effects a product will have on the environment and its safety are evaluated through prior assessment and design reviews. Through such efforts, Sumitomo Bakelite strives for safety and environmental protection, not only for itself but also for its customers and neighboring communities.



レスポンスフル・ケア

### What is Responsible Care?

Responsible Care is a voluntary program for implementing and improving measures to protect safety, health, and the environment. Under the program, corporations that manufacture or handle chemicals pledge in their management policies that they will voluntarily assure safety and preserve the environment throughout the entire life cycle of their chemical products, from development through distribution, use, consumption, and final disposal.

Responsible Care was first advocated by the Chemical Products Manufacturers Association of Canada in 1984. Since then, the program has evolved into a global effort comprising the world's leading chemical corporations, with those from industrialized nations representing the majority. The Japan Chemical Industry Association is at the center of early Responsible Care activities in Japan, and, in 1995, the Japan Responsible Care Council was established, with corporate members committing themselves to the principles of Responsible Care.

## Internal Audits System

Sumitomo Bakelite has been conducting annual internal audits on all seven of its domestic offices and facilities since 1973. In 1978, the scope of these audits was expanded to include

eight of the Company's domestic affiliates, and, in 1993, triennial audits were initiated at nine of its overseas affiliates.

The Company's audits comprise assessments of compliance with legislative regulations on safety and the environment and the state of voluntary initiatives as well as on-site confirmatory inspections. Furthermore, in 1995 surveys and self-evaluations based on the precepts of Responsible Care were added to the process.

Moreover, at our ISO 14001-certified offices and facilities, we conduct internal audits based on our environmental management system and call on professional auditing institutions to conduct external audits, helping us to confirm that our environmental systems are performing as they should.

## Employee Training

Sumitomo Bakelite regularly conducts training courses on such topics as chemical safety, the environment, legal regulations, and practical safety operations according to an annual schedule.

Furthermore, the Company also strives to improve safety and the environment through training and hands-on education sessions for people outside the Company.

The photograph above shows the Legal Regulations Study Group for the Safe Management of Chemicals, one of our internal group training programs.



## ISO 14001 Initiatives

Sumitomo Bakelite promotes the acquisition of ISO 14001 certification to fulfill the potential of its environmental management systems. All the Company's production facilities are now ISO 14001 certified. The Utsunomiya Plant was the first to be certified, in 1997, and was followed in quick succession by the Amagasaki, Shizuoka, and Tsu plants, which were all certified in 1998. Furthermore, affiliates Sumitomo Durez Co., Ltd., and Kyushu Bakelite Industry Co., Ltd., as well as three overseas manufacturing subsidiaries have also been certified. They have all established their own environmental management systems and are actively engaged in efforts to reduce the impact they place on the environment.

# Environmental- Conservation Activities

Sumitomo Bakelite promotes Responsible Care in all of its business operations and, at the same time, working in close cooperation with the communities in which it operates, is actively engaged in safety, health, and environmental initiatives.

Looking to reduce its environmental impact, the Company also strives for sustained improvements through its Plan, Do, Check, Action (PDCA) cycle. (Environmental performance data listed on pages 6 through 9 are aggregate statistics collected from all affiliates in Japan.)

|        |                                    |
|--------|------------------------------------|
| page 5 | Management of chemical substances  |
| page 7 | Waste reduction and recycling      |
| page 8 | Energy saving                      |
| page 9 | Air and water pollution prevention |

## Management of chemical substances

The manufacture and sale of chemicals is Sumitomo Bakelite's principal business. While chemicals are undoubtedly highly useful materials, without proper handling they can, in certain circumstances, pose a risk to safety, health, and the environment.

The risks posed by the hazards of chemical substances vary greatly depending on the quantity that people come into contact with or ingest, timing, and the way in which they are handled. To improve understanding of these risks, promote the proper use, transport, and disposal of chemicals, and respond appropriately in the event of an accident, Sumitomo Bakelite is working to actively disclose hazard and risk data through MSDS and Yellow Card.

Furthermore, since 1996 the Company has been implementing PRTR, through which it is working for environmental conservation by ascertaining usage and emission volumes. Through the development of new technologies that do not use solvents and the safe incineration of waste solvents, we are working to significantly reduce the volume of organic solvent waste.

Of the 354 chemicals designated by the PRTR Law as Type 1 substances, in recent years the Company has annually emitted into the atmosphere more than one ton of just four chemicals. On the following page, Companywide emission volumes and planned reduction values are listed (emissions into water and soil are negligible, amounting to less than one ton annually).

We have made painstaking efforts to completely eliminate the leakage of chemicals into the soil and ascertained the state of soil contamination by chlorinated organic solvents and substances at all plants and sites of former plants, confirming that all results fall within safety standards.

Such items as condensers that use Polychlorinated Biphenyls (PCBs) are securely stored in storage vaults reserved for their exclusive use, and the condensers are properly maintained until they can be disposed of.

Moreover, we are working to gather data on endocrine disruptors, which are also known as environmental hormones, and simultaneously preparing an appropriate response.

### ● **MSDS** (Material Safety Data Sheets)

MSDS are drawn up whenever a new product is developed and marketed and are regularly reviewed and updated. With the revision of the Occupational Health and Safety Law, the enactment of the PRTR Law, and the revision of the Poisonous Material Control Law, MSDS are now legally required, and Sumitomo Bakelite prepares them according to the MSDS standards of ISO 11014-1 and JIS Z7250.

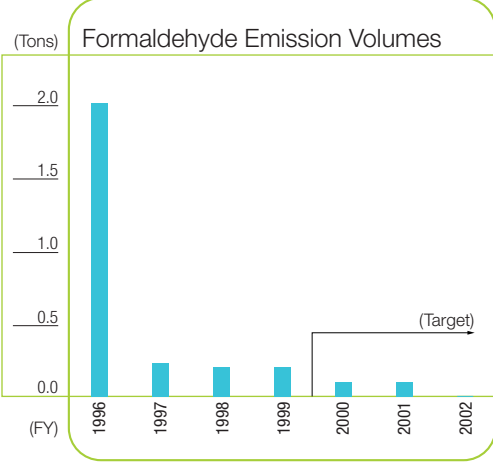
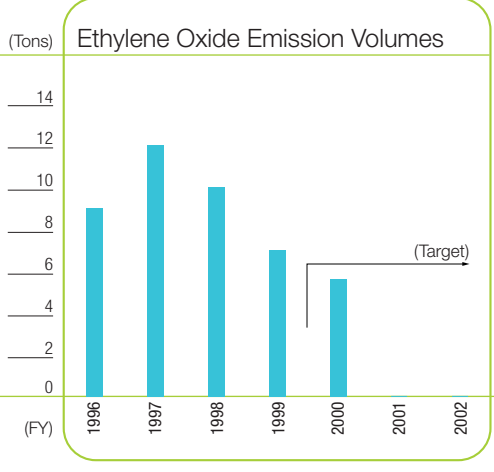
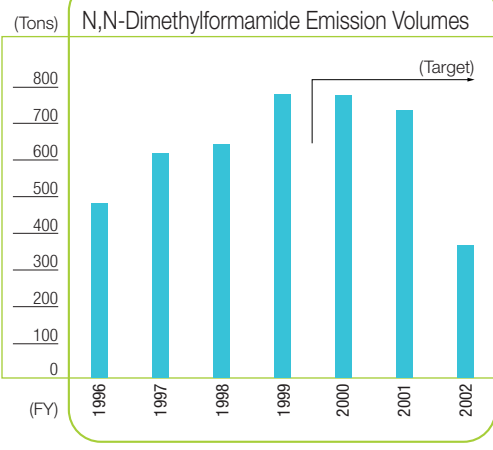
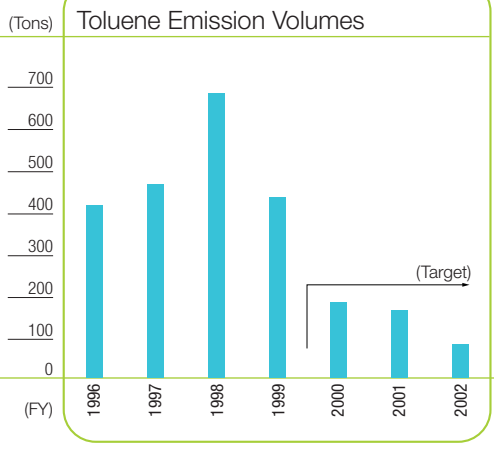
For products that we export, we are working to ensure that information about what, if any, bearing local laws have on the product and make MSDS available in the local language.

### ● **Yellow Card** (Emergency Response Cards)

To ensure safety during transport, Emergency Response Cards are carried by drivers at all times. These detail the properties of the substance being transported and explain how it should be handled.

### ● **PRTR** (Pollutant Release and Transfer Register)

Since 1995, Sumitomo Bakelite has been voluntarily surveying and reporting on emissions of 12 types of hazardous air-polluting substances. In 1996, we instituted a PRTR scheme as an upstanding member of the Japan Chemical Industry Association. Furthermore, since the 1997 enactment of the PRTR Law we have strengthened our control systems, enhanced the precision of our methods for ascertaining emission volumes, and worked hard to voluntarily reduce emission volumes.



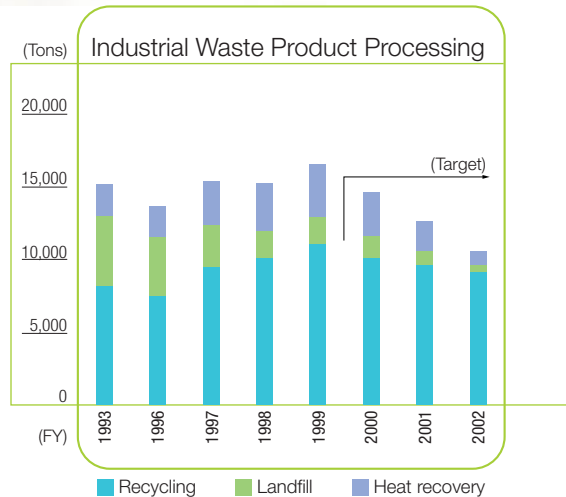


# Waste reduction and recycling

To make more efficient use of limited natural resources and provide solutions to the growing problem of waste, Sumitomo Bakelite is encouraging all of its offices and facilities, both domestic and abroad, to reduce the amount of waste they generate and reuse and recycle whenever possible.

In 1992, the Company established S.B. Recycle Co., Ltd., to further promote recycling. The Company researches recycling technologies and ways in which by-products can be reused. It also works to develop systems for the recovery and treatment of waste products generated by Sumitomo Bakelite and its customers.

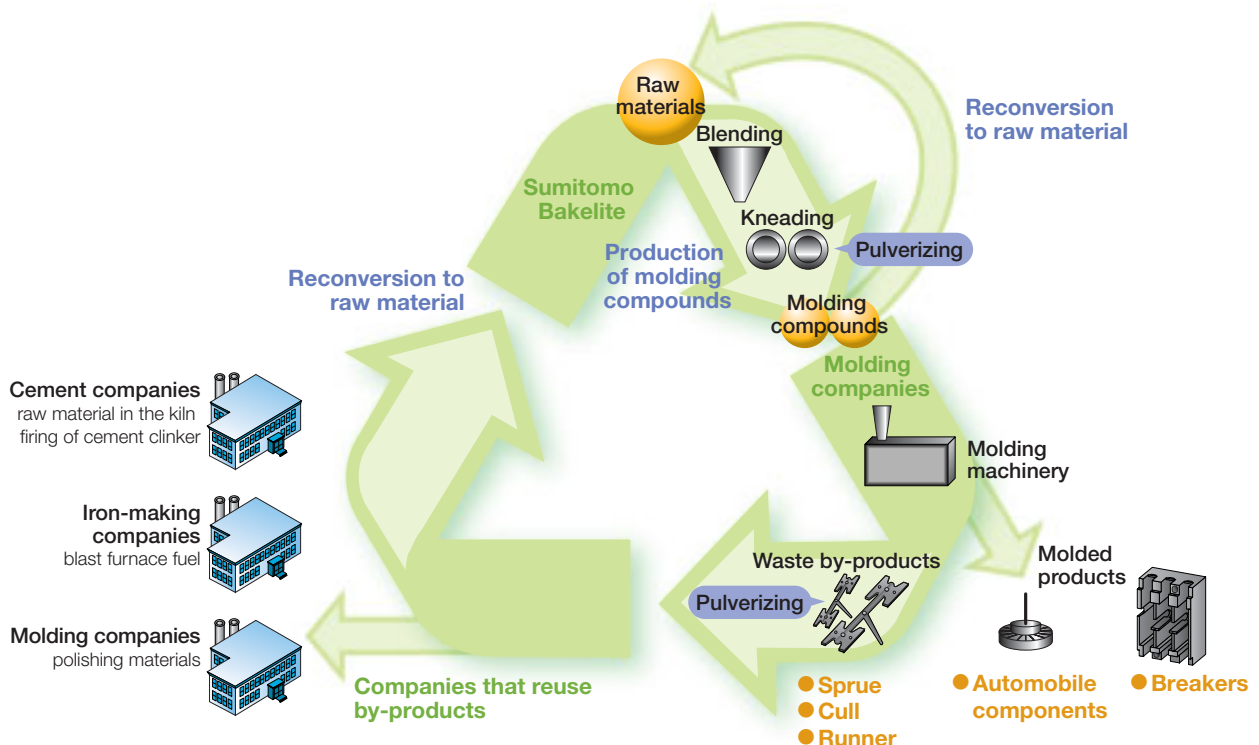
Although we have yet to achieve a substantial reduction in the volume of waste we generate, we will continue to accord this issue top priority and accept no compromise in the struggle to completely eliminate waste that must be disposed of in landfills and incinerators.



## ● Recycling system for phenolic resin molding compounds

In addition to the waste generated by the production of molding compounds, such waste by-products as sprue, cull, and runner are also generated at molding companies during the molding process itself. We are furthering the cause of recycling with our recyclable phenolic resin molding compounds

and have organized a material recycling system facilitating the reuse of by-products, even in industries other than the one in which they are generated. These by-products are either finely pulverized and converted back into molding compounds or alternatively roughly ground down and supplied to cement companies, which use them as combustion enhancers instead of coke. The ash in the residual slag is also used as a raw material for cement.



# Energy saving

People around the world are calling for energy conservation as an imperative to halt global warming and protect the Earth's natural resources. Since fiscal 1993, Sumitomo Bakelite, aware of its responsibilities as a corporate citizen, has been making determined efforts to conserve energy.

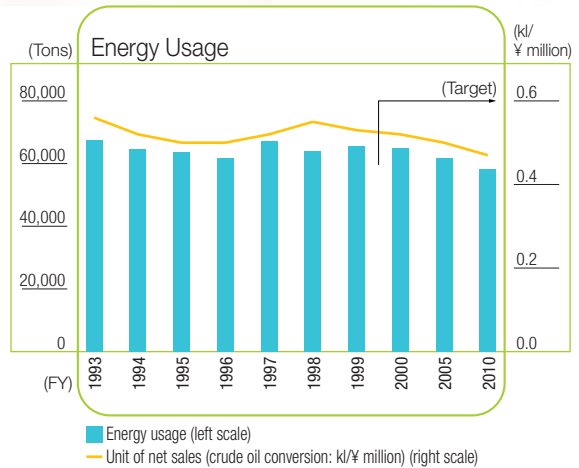
In line with these efforts, we established a new objective—to reduce our energy consumption 10% from the fiscal 1996 level by fiscal 2000. We are also further striving to conserve energy through the following three key initiatives:

- ① Waste prevention—a program supported by all employees
- ② Promotion of energy-efficient production through the reassessment of production processes
- ③ Conversion to new energy-conserving technologies and manufacturing methods

Sumitomo Bakelite has maintained energy-usage volumes since 1997. However, in fiscal 1999 we reduced usage volume per unit of net sales 3% year-on-year. Each year, the Company continues to invest in energy-conservation measures as part of its environmental initiatives. The graph on the right illustrates the growth of these investments. Principal energy conservation measures implemented in fiscal 1999 are as follows:

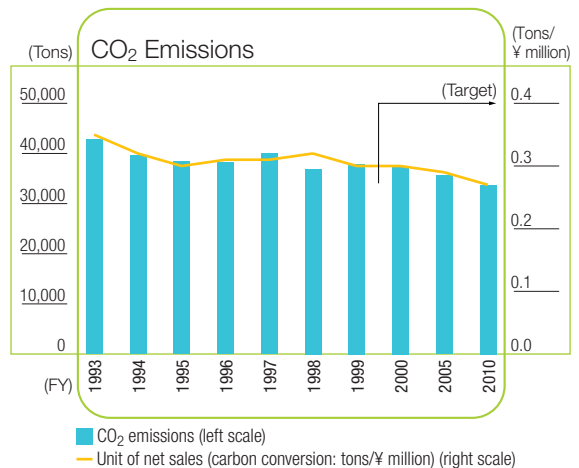
- ① Recovery of waste heat from coating plant
- ② Efficient operation of compressors
- ③ Optimization of boiler oxygen density

Sumitomo Bakelite has set a variety of objectives for the future—improved waste heat recovery, conversion to energy-conservation processes, and the deployment of cogeneration facilities—and aims to meet target figures set both nationally and by industry associations.



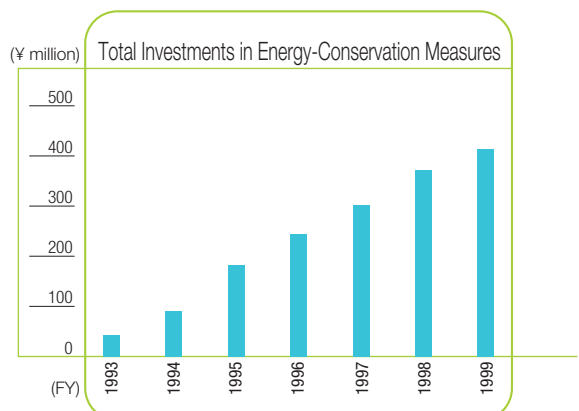
Crude oil conversion values for energy-usage volumes

|             |                     |                       |   |
|-------------|---------------------|-----------------------|---|
| A Heavy oil | Crude oil 1.01k/1kl | Kerosene              | Crude oil 0.96k/1kl                       |
| C Heavy oil | Crude oil 1.06k/1kl | Purchased electricity | Crude oil 1.01k/10,000 kWh of electricity |



Carbon conversion values for CO2 emissions

|             |                           |                       |                                   |
|-------------|---------------------------|-----------------------|-----------------------------------|
| A Heavy oil | 736kg carbon/kl crude oil | Kerosene              | 690kg carbon/kl kerosene          |
| C Heavy oil | 802kg carbon/kl crude oil | Purchased electricity | 0.104kg carbon/kWh of electricity |

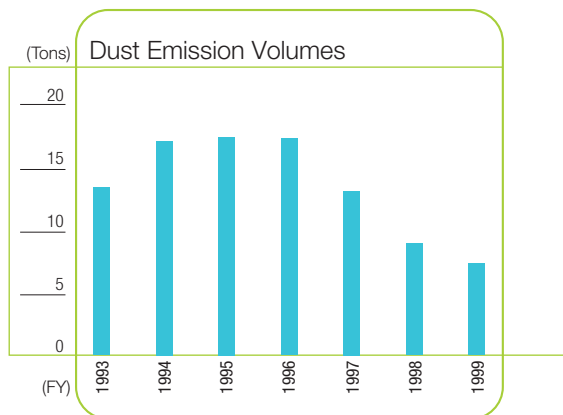
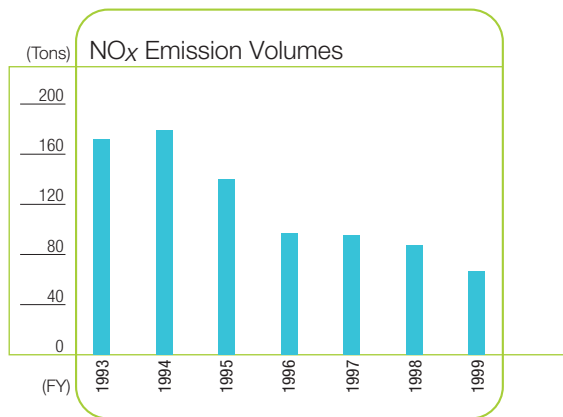
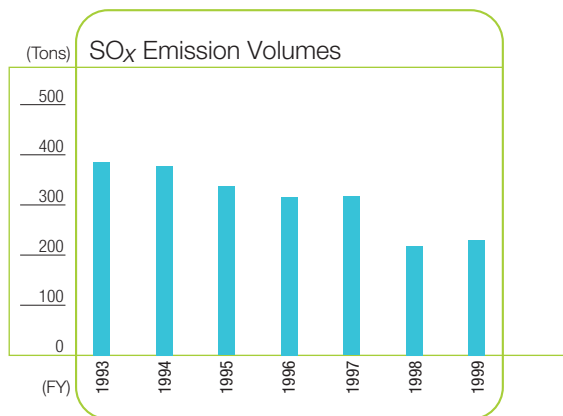




# Air and water pollution prevention

## ● Smoke and soot volumes

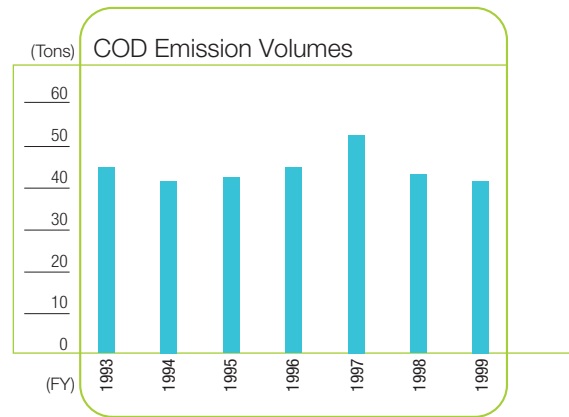
Sumitomo Bakelite is steadily reducing emission volumes of smoke and soot containing SO<sub>x</sub> and pollutants, which are primarily emitted from its boilers. We are also working to select better fuels and achieve optimum combustion conditions to improve upon this progress.



## ● COD emissions

Sumitomo Bakelite handles large quantities of phenol, formalin, and solvents in the manufacture of its products. To prevent water pollution by these chemicals, the Company has positioned the attainment of a "closed-loop system." To this end, we have installed the following treatment facilities, installed constant monitoring systems that use special monitoring devices, and adhere strictly to community accords on pollution prevention.

- ① High-precision phenol recovery devices
- ② Active sludge devices
- ③ Neutralizing coagulators (for the treatment of metals)



Wastewater monitoring apparatus

# Environmental Products and Technology Development

Leveraging the technological expertise it has accumulated over many years in the resins business, Sumitomo Bakelite develops and supplies a wide variety of products and technologies to aid in the preservation of the environment.



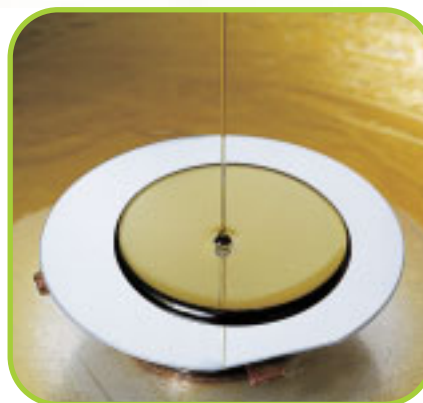
Sumicon EME

## ● Semiconductor molding compounds “Sumicon EME”

As one of the world’s leading companies in the molding compounds sector, Sumitomo Bakelite provides epoxy resin molding compounds for semiconductor encapsulation to many of the world’s semiconductor manufacturers. Research into such constituents as resins, fillers, and flame retardants has allowed us to develop and market superbly reliable halogen- and antimony-free encapsulation molding compounds whose flame retardant properties are preserved. We are also in the process of developing flame retardant-free compounds.

## ● Green laminates “Sumilite PLC, ELC, and APL”

As a result of our extensive research into resins, fillers, and flame retardants, we have been able to develop and market a range of “green laminates”—halogen-free environmental laminates—including phenol-derived Sumilite PLC and epoxy-derived Sumilite ELC, as copper-clad laminates for television and VTR electric circuits. We have also developed and brought to market copper foil-covered insulated APL sheets for environmental buildup laminates.



Sumiresin Excel CRC

## ● Solvent-free wafer coating “Sumiresin Excel CRC”

With the exponential increase in the memory capacity of semi-conductors and demand for higher speeds, circuit widths have become narrower, and reliability is more of an imperative than ever. To meet these demands, Sumitomo Bakelite has developed and now sells a range of positive photosensitive wafer coats, the Sumiresin Excel CRC8000 Series. This has enabled semiconductor manufacturers to use alkaline aqueous solutions in developing fluid and purified water in rinsing solutions and eliminated the need to use specialized solvents.

## ● Flash-free phenolic resin molding compounds “Sumicon PM”

One drawback of molding using phenolic resin molding compounds is the generation of flash, the section of charge that oozes from the joint line of the mold cavity. Sumitomo Bakelite has researched molding technology from every conceivable angle, taking full account of the molding conditions at its customers’ locations as well as development of the molds, and developed molding compounds that produce neither flash nor any other by-products. These efforts have helped minimize such waste products as sprue and runner and achieved a 30% to 40% shortening of the molding cycle.

# Hand in Hand with Society

Sumitomo Bakelite and its employees actively participate in a wide range of community activities, including green volunteer programs, environmental fairs, and disaster prevention drills. Through our plant tours for the general public and the briefing meetings that we hold when installing new equipment, we will continue to work closely with the communities where we operate, united in our shared goals of safety and environmental protection for all as a corporation that people can truly trust.

## Workplace experience for local junior high school students

A number of students are invited to the Shizuoka Plant annually for hands-on experience as part of their curriculum.



## Annual O-Bon dance festival

Also at the Shizuoka Plant, we hold the annual O-Bon dance festival on the premises on a pleasant summer evening. This is a highlight of the year and offers employees and local citizens a chance to mingle and get to know each other.



## Participating in environmental-conservation programs

Sumitomo Bakelite hosts lectures on the environment, acting as a leading light in regional environmental-conservation councils that bring together corporations operating in the area and officials from the local administration.



## Emergency drills

Members of the Amagasaki Plant emergency protection squad participate in local earthquake and disaster drills and conduct training sessions on how to operate pumps and water cannons.



## Kenaf cultivation

Kenaf is an annual fibrous hibiscus known for its impressive ability to absorb carbon dioxide and hence regarded as particularly environmentally friendly. It is currently being experimentally grown at all Sumitomo Bakelite facilities. In conjunction with local kenaf growers' associations, we are making kenaf paper and holding get-togethers to sample some of the delights of kenaf cuisine. We are also conducting research into the use of kenaf powder as filler in molding compounds.



## Local festivals

Employees of Sumitomo Bakelite affiliates share a good time with local citizens at summer festivals across Japan.



## Environmental-Protection Marathon

In Johor Bahru, Malaysia, an Environmental-Protection Marathon was held in support of schoolyard tree planting. Employees from Sumitomo Bakelite's local subsidiary, SNC Industrial Laminates Sdn. Bhd., were delighted to participate in the event.

# Sumitomo Bakelite Group

## Domestic Network

Sumitomo Durez Co., Ltd.  
Tennoz Parkside Building, 2-5-8 Higashi-Shinagawa, Shinagawa-ku, Tokyo 140-0002  
Tel. 03-5462-4843

Akita Sumitomo Bakelite Co., Ltd.  
27-4 Aza-Nakajimashita, Tsuchizakiminato Aisome-cho, Akita 011-8510  
Tel. 0188-45-1181

Tsutsunaka Plastic Industry Co., Ltd.  
3-5-11 Doshou-Machi, Chuo-ku, Osaka 541-0045  
Tel. 06-6229-5000

Artlite Industry Co., Ltd.  
905 Nishino-cho, Mihara, Hiroshima 723-0065  
Tel. 0848-62-3157

Tokyo Kakohin Co., Ltd.  
300-2 Kamikawa-cho Motohara, Kodama-gun, Saitama 367-0241  
Tel. 0495-77-4601

Hokkai Taiyo Plastic Co., Ltd.  
2-763-7 Shinko-Chuo, Ishikari, Hokkaido 061-3242  
Tel. 0133-64-6611

Nippon Denka, Ltd.  
4-9-25 Hongo, Bunkyo-ku, Tokyo 113-0033  
Tel. 03-5802-1561

Sano Plastic Co., Ltd.  
213 Kubo-cho, Sano, Tochigi 327-0845  
Tel. 0283-22-6133

Otomo Chemical Co., Ltd.  
1515 Nakatsu-cho, Marugame, Kagawa 763-0054  
Tel. 0877-23-1111

Yamaroku Kasei Industry Co., Ltd.  
19-10 Katayama-cho, Kashiwara, Osaka 82-0020  
Tel. 0729-77-3321

Kyushu Bakelite Industry Co., Ltd.  
40-1 Ouaza-Kamisakai Aza-Mizumachi, Nougata, Fukuoka 822-0006  
Tel. 09492-3-1911

Himeji Adhesive Industry Co., Ltd.  
1-2 Irifune-cho, Harima-ku, Himeji, Hyogo 672-8076  
Tel. 0792-34-1999

Japan Communication Accessories Manufacturing Co., Ltd.  
1300 Ouaza-Kitatoyama Irukashinden, Komaki, Aichi 485-0022  
Tel. 0568-73-3400

Miyagi Electronics Co., Ltd.  
1-2-31 Suga, Tama-ku, Kawasaki, Kanagawa 214-0001  
Tel. 044-945-2028

SPD Co., Ltd.  
495 Akiba-cho, Totsuka-ku, Yokohama 245-0052  
Tel. 045-811-1661

ST Film Sheet Co., Ltd.  
2-3-47 Higashi-Tsukaguchi-cho, Amagasaki, Hyogo 661-6011  
Tel. 06-6429-1725

Advanced Plastics Compound Company  
4-1-23 Shiba, Minato-ku, Tokyo 108-0014  
Tel. 03-5441-4748

Sunbake Co., Ltd.  
3-2-5 Kasumigaseki, Chiyoda-ku, Tokyo 100-6009  
Tel. 03-3592-4168

S.B. "DECOLA" & Building Materials Co., Ltd.  
Tennoz Parkside Building, 2-5-8 Higashi-Shinagawa, Shinagawa-ku, Tokyo 140-0002  
Tel. 03-5462-4170

Sumibe Service Company Ltd.  
Tennoz Parkside Building, 2-5-8 Higashi-Shinagawa, Shinagawa-ku, Tokyo 140-0002  
Tel. 03-5462-4853

S.B. Techno-Research Co., Ltd.  
495 Akiba-cho, Totsuka-ku, Yokohama 245-0052  
Tel. 045-813-1641

S.B. Medical Care Co., Ltd.  
Tennoz Parkside Building, 2-5-8 Higashi-Shinagawa, Shinagawa-ku, Tokyo 140-0002  
Tel. 03-5462-4858

S.B. Information System Co., Ltd.  
Tennoz Parkside Building, 2-5-8 Higashi-Shinagawa, Shinagawa-ku, Tokyo 140-0002  
Tel. 03-5462-4867

S.B. Recycle Co., Ltd.  
2100 Takayanagi, Fujieda, Shizuoka 426-0041  
Tel. 054-635-6445

SBTEG Co., Ltd.  
1-1-5 Murotani, Nishi-ku, Kobe, Hyogo 651-2241  
Tel. 078-992-3903

## Overseas Network

P.T. Pamolite Adhesive Industry  
59, J.L.M.H. Thamrin, Jakarta, INDONESIA  
Tel. 62-21-330775/Fax. 62-21-327582

Sumitomo Plastics America, Inc.  
900 Lafayette Street, Suite 510, Santa Clara, CA 95050, USA  
Tel. 1-408-243-8402/Fax. 1-408-243-8405

CMK Singapore Pte. Ltd.  
502 Chai Chee Lane, Singapore 1646, SINGAPORE  
Tel. 65-4498491/Fax. 65-4453378

Sumitomo Bakelite Singapore Pte. Ltd.  
1 Senoko South Rd., Singapore 758069, SINGAPORE  
Tel. 65-7526431/Fax. 65-7526830

Sumitomo Bakelite Europe B.V.  
New Amsterdam Building, Hoekenrode 2, 1102 BR Amsterdam, THE NETHERLANDS  
Tel. 31-20-6911086/Fax. 31-20-6910691

CMK Europe N.V.  
Nijverheidsstraat 18 B-2260 Westerlo-Oevel, BELGIUM  
Tel. 014-224666/Fax. 014-224665

Sumicarrier Singapore Pte. Ltd.  
72 Senoko Drive, Singapore 758240, SINGAPORE  
Tel. 65-7528800/Fax. 65-752519

Tsu-Kong Co., Ltd.  
8-4-301, Taipei, TAIWAN  
Tel. 886-2-502-0220/Fax. 886-2-501-8018

SumiDurez Singapore Pte. Ltd.  
9 Tanjong Penjuru Crescent, Jurong Industrial Park, Singapore 608972, SINGAPORE  
Tel. 65-2651717/Fax. 65-2641916

SNC Industrial Laminates Sdn. Bhd.  
PLO 38, Jalan Keluli Satu, Pasir Gudang Industrial Estate, 81700 Pasir Gudang, Johor, MALAYSIA  
Tel. 60-72-512199/Fax. 60-72-512084

CMKS (Malaysia) Sdn. Bhd.  
PLO 436, Jalan Keluli Satu, Pasir Gudang Industrial Estate, 81700 Pasir Gudang, Johor, MALAYSIA  
Tel. 07-2512259/Fax. 07-2513875

P.T. CMKS Indonesia  
EJIP Industrial Park Plot No. 7E Lemahabang, Bekasi 17550 Jawa-Barat, INDONESIA  
Tel. 021-8970230/Fax. 021-8970231

P.T. Indopherin Jaya  
59, J.L. M.H. Thamrin, Jakarta, INDONESIA  
Tel. 62-21-3914010/Fax. 62-21-3914012

Sumitomo Bakelite (Suzhou) Co., Ltd.  
140 Jinji hu Road, Start-up Area, China-Singapore Suzhou Industrial Park, Suzhou, CHINA  
Tel. 0086-512-7613850/Fax. 0086-512-7630053

SumiDurez Canada G.P.  
100 Dunlop Street, P.O. Box 100 Fort Erie, Ontario 12A 5M6, CANADA  
Tel. 905-871-3206/Fax. 905-871-7979

SB Flex Philippines, Inc.  
Lot 6B, Phase 1-A First Philippine Industrial Park Barangay, Sta. Anastasia, Sto. Tomas, Batangas, THE PHILIPPINES  
Tel. 63-43-405-5014/Fax. 63-43-405-5010

Sumitomo Bakelite (Taiwan) Co., Ltd.  
No. 1 Hwa Syi Road, Ta Fa Industries District, Ta Liao, Kaohsiung, TAIWAN  
Tel. 886-7-787-1285/Fax. 886-7-787-1239

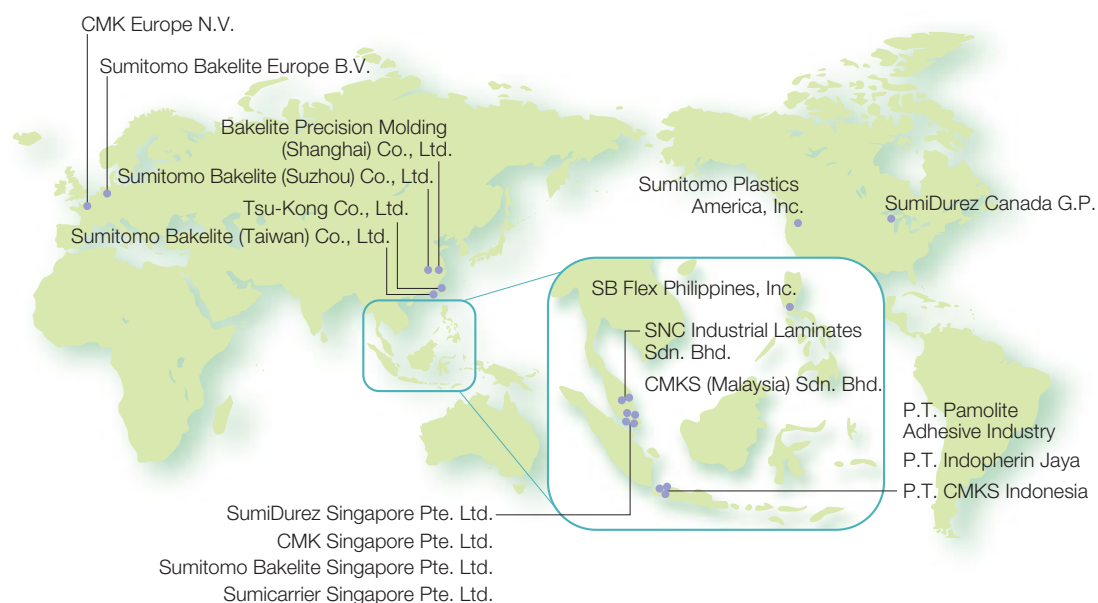
Bakelite Precision Molding (Shanghai) Co., Ltd.  
No. 66 AiDu Road Wai Gao Qiao Free Trade Zone Pudong, Shanghai, CHINA 200131  
Tel. 86-21-5046-0091/Fax. 86-21-5046-0801

# Corporate Data

As of March 31, 2000

## Corporate Data

|   |   |   |
|---|---|---|
| <p>● <b>Company Name</b><br/>Sumitomo Bakelite Co., Ltd.</p>                                      | <p><b>Head Office</b><br/>Tennoz Parkside Building,<br/>2-5-8 Higashi-Shinagawa, Shinagawa-ku,<br/>Tokyo 140-0002, JAPAN<br/>Tel. +81(0)3-5462-4111</p>                   | <p><b>Amagasaki Plant</b><br/>2-3-47 Higashi-Tsukaguchi-cho,<br/>Amagasaki, Hyogo 661-8588, JAPAN<br/>Tel. +81(0)6-6429-6941<br/>Fax. +81(0)6-6427-8055</p> |
| <p>● <b>Established</b><br/>January 25, 1932</p>  | <p><b>Fundamental Research Laboratory</b><br/>495 Akiba-cho, Totsuka-ku, Yokohama,<br/>Kanagawa 245-0052, JAPAN<br/>Tel. +81(0)45-811-1661<br/>Fax. +81(0)45-812-4898</p> | <p><b>Shizuoka Plant</b><br/>2100 Takayanagi, Fujieda, Shizuoka<br/>426-0041, JAPAN<br/>Tel. +81(0)54-635-2420<br/>Fax. +81(0)54-636-0294</p>               |
| <p>● <b>President and CEO</b><br/>Tsuneo Moriya</p>   | <p><b>Kobe Fundamental Research Laboratory</b><br/>1-1-5 Murotani, Nishi-ku, Kobe,<br/>Hyogo 651-2241, JAPAN<br/>Tel. +81(0)78-992-3900<br/>Fax. +81(0)78-992-3919</p>    | <p><b>Utsunomiya Plant</b><br/>20-7 Kiyohara-Kogyodanchi,<br/>Utsunomiya, Tochigi 321-3231, JAPAN<br/>Tel. +81(0)28-667-6211<br/>Fax. +81(0)28-667-5519</p> |
| <p>● <b>Net Sales</b><br/>¥124.5 billion (Non-consolidated)<br/>¥192.7 billion (Consolidated)</p> | <p><b>Osaka Office</b><br/>2-3-47 Higashi-Tsukaguchi-cho,<br/>Amagasaki, Hyogo 661-8588, JAPAN<br/>Tel. +81(0)6-6429-6941<br/>Fax. +81(0)6-6427-8055</p>                  | <p><b>Tsu Plant</b><br/>5-7-1 Takachaya, Tsu,<br/>Mie 514-0819, JAPAN<br/>Tel. +81(0)59-234-2181<br/>Fax. +81(0)59-234-8728</p>                             |
| <p>● <b>Capital</b><br/>¥26.7 billion</p>   | <p><b>Nagoya Office</b><br/>3-15-15 Nishiki, Naka-ku, Nagoya,<br/>Aichi 460-0003, JAPAN<br/>Tel. +81(0)52-955-3521<br/>Fax. +81(0)52-955-3526</p>                         |   |
| <p>● <b>Shareholders</b><br/>14,934</p>   |   |   |
| <p>● <b>Employees</b><br/>2,179</p>   |   |   |



 **SUMITOMO BAKELITE CO., LTD.**

**Contact: Environment, Safety & Recycling Dept.**  
Tennoz Parkside Building, 2-5-8 Higashi-Shinagawa,  
Shinagawa-ku, Tokyo 140-0002, JAPAN  
Tel. +81(0)3-5462-3471 Fax. +81(0)3-5462-4873



This report has been printed on 100% non-wood fiber kenaf paper  
in the interests of environmental protection.

Jan. 2001  
Printed in Japan